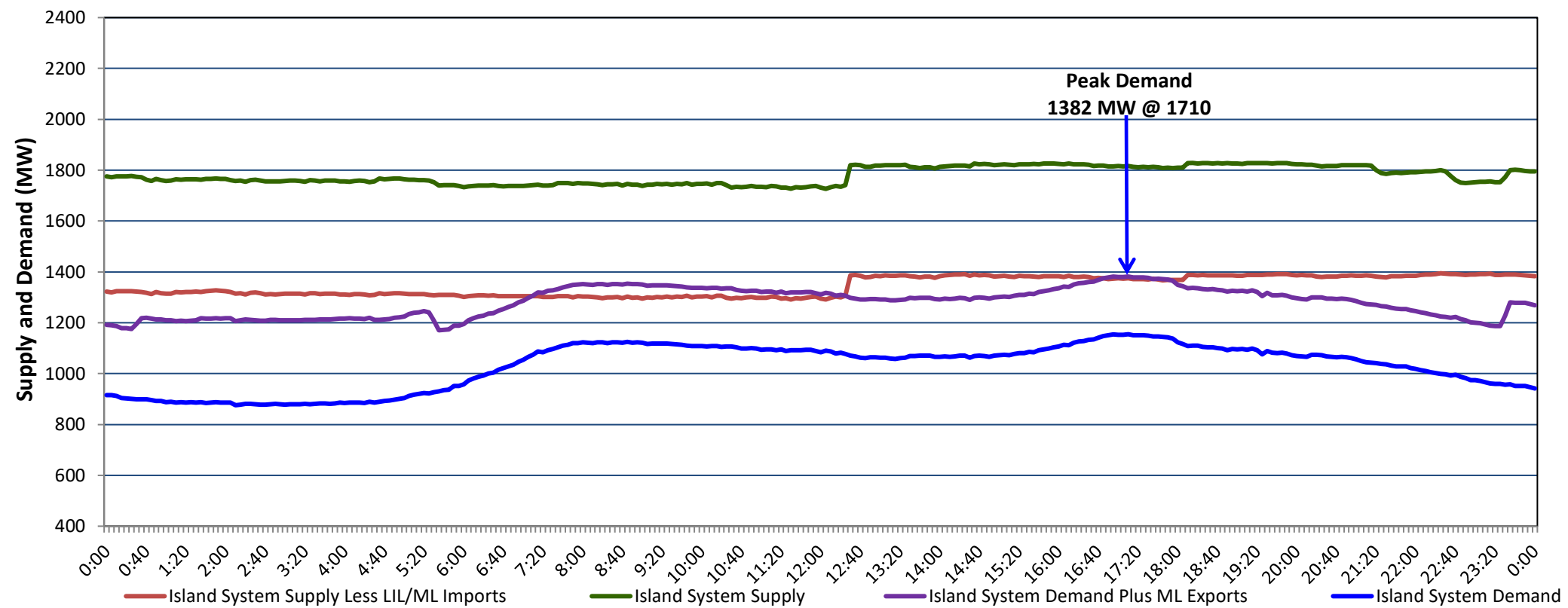


**Newfoundland Labrador Hydro (NLH)
Supply and Demand Status Report Filed Tuesday, November 14, 2023**

**Section 1
Island Interconnected System Supply, Demand & Exports
Actual 24 Hour System Performance For Friday, November 10, 2023**



Supply Notes For November 10, 2023

- A As of 0701 hours, March 06, 2023, Upper Salmon Unit unavailable (84 MW).
- B As of 0800 hours, May 21, 2023, Holyrood Unit 2 unavailable due to planned outage (170 MW).
- C As of 2059 hours, July 13, 2023, Stephenville Gas Turbine unavailable (50 MW).
- D As of 0827 hours, October 15, 2023, St. Anthony Diesel Plant available at 7.7 MW (9.7 MW).
- E As of 0035 hours, October 28, 2023, Holyrood Unit 3 available at 50 MW (150 MW).
- F As of 2036 hours, November 07, 2023, Holyrood Unit 1 unavailable due to planned outage 122 MW (170 MW).
- G As of 1809 hours, November 08, 2023, Granite Canal Unit unavailable (40 MW).
- H **At 1227 hours, November 10, 2023, Bay d'Espoir Unit 1 available (76.5 MW).**

**Section 2
Island Interconnected Supply and Demand**

Sat, Nov 11, 2023	Island System Outlook ³		Seven-Day Forecast		Temperature (°C)		Island System Daily Peak Demand (MW)	
					Morning	Evening	Forecast	Adjusted ⁷
Available Island System Supply: ⁵	1,827	MW	Saturday, November 11, 2023		2	2	1,445	1,358
NLH Island Generation: ^{4,8}	1,075	MW	Sunday, November 12, 2023		1	-1	1,440	1,353
NLH Island Power Purchases: ⁶	110	MW	Monday, November 13, 2023		0	0	1,475	1,388
Other Island Generation:	220	MW	Tuesday, November 14, 2023		-1	0	1,430	1,343
ML/LIL Imports:	422	MW	Wednesday, November 15, 2023		0	0	1,255	1,170
Current St. John's Temperature & Windchill:	1 °C	N/A °C	Thursday, November 16, 2023		0	0	1,250	1,166
7-Day Island Peak Demand Forecast:	1,475	MW	Friday, November 17, 2023		3	5	1,140	1,057

Supply Notes For November 11, 2023

- Notes:
1. Generation outages for running and corrective maintenance are included. These are not unusual for power system operations. They generally do not impact customer supply. The power system operators schedule outages to system equipment whenever possible to coincide with periods when customer demands are low and sufficient supply reserves are available. However, from time to time equipment outages are necessary and reserves may be impacted.
 2. Due to the Island system having no synchronous connections to the larger North American grid, when there is a sudden loss of large generating units there may be a requirement for some customer's load to be interrupted for short periods to bring generation output equal to customer demand. This automatic action of power system protection, referred to as under frequency load shedding (UFLS), is necessary to ensure the integrity and reliability of system equipment. Under frequency events have typically occurred 5 to 8 times per year on the Island Interconnected System and the resultant customer load interruptions are generally less than 30 minutes. With the activation of the Maritime Link frequency controller during the winter of 2018, UFLS events have occurred less frequently.
 3. As of 0800 Hours.
 4. Gross output including station service at Holyrood (24.5 MW) and improved NLH hydraulic output due to water levels (35 MW).
 5. Gross output from all Island sources (including Note 4).
 6. NLH Island Power Purchases include: CBPP Co-Gen, Nalcor Exploits, Rattle Brook, Star Lake, Wind Generation and capacity assistance (when applicable).
 7. Adjusted for curtailable load, market activities and the impact of voltage reduction when applicable.
 8. Due to limitations inherent in the design of combustion turbines, the output of combustion turbines may be reduced in the event that ambient temperatures exceed the threshold

**Section 3
Island Peak Demand Information
Previous Day Actual Peak and Current Day Forecast Peak**

Fri, Nov 10, 2023	Actual Island Peak Demand ⁹	17:10	1,382 MW
Sat, Nov 11, 2023	Forecast Island Peak Demand		1,445 MW

Notes: 9. Island Demand / LIL / ML Exports (where applicable) is supplied by NLH generation and purchases, plus generation owned and operated by Newfoundland Power and Corner Brook Pulp & Paper (Deer Lake Power, DLP).